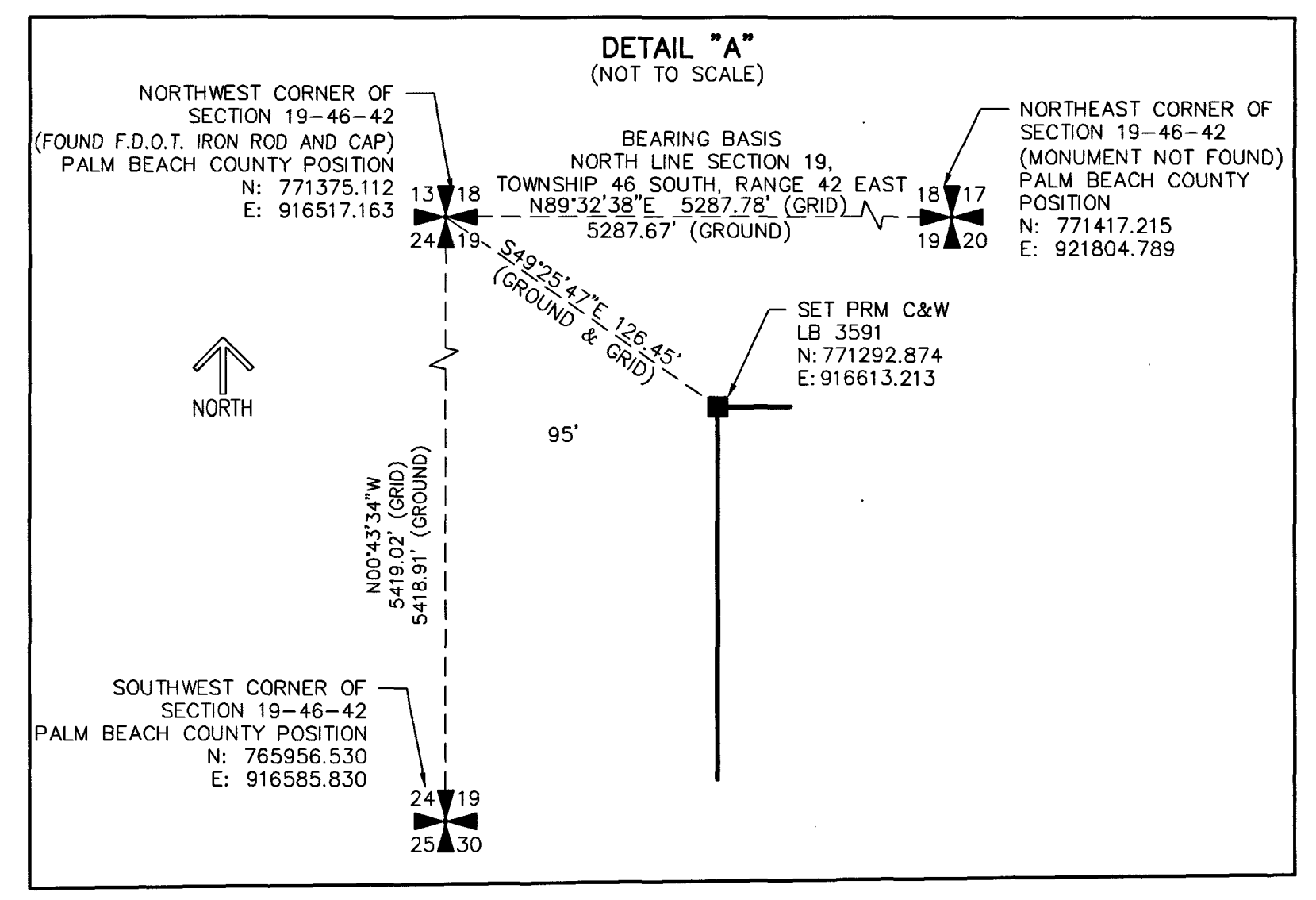


MOUNTAIN BUSINESS CENTER MUPD

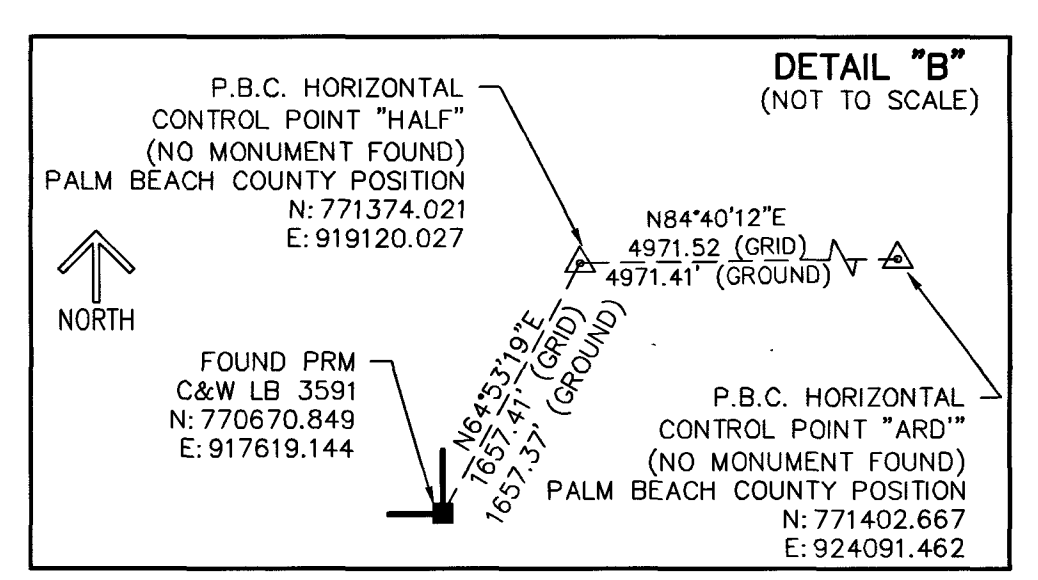
A REPLAT OF A PORTION OF TRACTS 13, 14, 15 AND 16, SECTION 19, TOWNSHIP 46 SOUTH, RANGE 42 EAST, PALM BEACH FARMS CO. PLAT NO. 1, RECORDED IN PLAT BOOK 2, PAGE 26, PUBLIC RECORDS OF PALM BEACH COUNTY, FLORIDA, LYING IN SECTION 19, TOWNSHIP 46 SOUTH, RANGE 42 EAST, PALM BEACH COUNTY, FLORIDA.

THIS INSTRUMENT PREPARED BY
 DAVID E. ROHAL
 OF
CAULFIELD & WHEELER, INC.
 SURVEYORS - ENGINEERS - PLANNERS
 7900 GLADES ROAD, SUITE 100
 BOCA RATON, FLORIDA 33434 - (561)392-1991

78
SHEET 3 OF 3



NOTES
COORDINATES, BEARINGS AND DISTANCES
 COORDINATES SHOWN ARE GRID
 DATUM = NAD 83 (90 ADJUSTMENT)
 ZONE = FLORIDA EAST
 LINEAR UNIT = US SURVEY FEET
 COORDINATE SYSTEM 1983 STATE PLANE
 TRANSVERSE MERCATOR PROJECTION
 ALL DISTANCES ARE GROUND, UNLESS NOTE OTHERWISE
 SCALE FACTOR = 1.0000205
 GROUND DISTANCE X SCALE FACTOR = GRID DISTANCE
 BEARINGS AS SHOWN HEREON ARE GRID DATUM,
 NAD 83 (90 ADJUSTMENT), FLORIDA EAST ZONE.



LEGEND/ABBREVIATIONS:

- CB - CHORD BEARING
- CD - CHORD DISTANCE
- D.B. - DEED BOOK
- Δ - DELTA (CENTRAL ANGLE)
- R - RADIUS
- L - ARC LENGTH
- N - NORTHING (WHEN USED WITH COORDINATES)
- E - EASTING (WHEN USED WITH COORDINATES)
- O.R.B. - OFFICIAL RECORDS BOOK
- P.B. - PLAT BOOK
- PG.(S) - PAGE(S)
- B.E. - BUFFER EASEMENT
- PBCUE - PALM BEACH COUNTY WATER UTILITIES DEPARTMENT EASEMENT
- F.D.O.T. - FLORIDA DEPARTMENT OF TRANSPORTATION
- LB - LICENSED BUSINESS
- L.W.D.D. - LAKE WORTH DRAINAGE DISTRICT
- MUPD - MULTI USE PLANNED DEVELOPMENT
- R/W - RIGHT-OF-WAY
- PRM - DENOTES PERMANENT REFERENCE MONUMENT SET 4"x 4"x 24" CONCRETE MONUMENT WITH ALUMINUM DISK STAMPED "C&W PRM LB3591" UNLESS OTHERWISE NOTED
- △ - DENOTES HORIZONTAL CONTROL POINT
- ✱ - INDICATES SECTION CORNER
- ✱ - INDICATES 1/4 SECTION CORNER